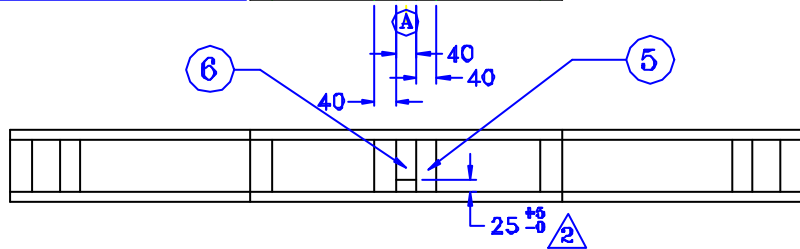


IMPORTANT

- 1) PROVIDE SCREW NAILS ONLY FOR FIXING ALL JOINTS
- 2) PROVIDE MINIMUM 3 SCREW NAILS AT EACH JOINT AS SHOWN
- 3) ITEM 6 MUST BR NAILED TO ITEM 5 WITHOUT GAP IN BETWEEN THIS ITEMS
- ② 4) TYPE I MUST BE MARKED K AND WHITE PAINT MARK AT LOCATION A
- 5) TYPE II MUST BE MARKED H AND BLUE PAINT MARK AT LOCATION A

NOTES :

- 1 - 1530 x 150 x 25(MIN)-(4 NOS)
- 2 - 600 x 100 x 40 (4 NOS)
- 3 - 1530 x 100 x 40 (2 NOS)
- 4 - 600 x 150 x 25(MIN) (8 NOS)
- 5 - 100 x 150 x 40(MIN) (8 NOS)
- 6 - 150 x 75 x 40 (2 NOS)



TYPE	MATERIAL	ST.CODE	USED	CAPACITY	MARKING	PACK NO.
1	KEMPAS WOOD	PKA-1516-008	EXPORT	4T	K+WHITE PAINT	3
2	HARD WOOD	PKA-1516-005	LOCAL	3T	H+BLUE PAINT	2

					METROD (OFHC) SDN BHD							
					DESCRIPTION		WOODEN PALLET - 8MM ROD (PACK NO.2/PACK NO.3)					
					DATE	13.08.98	SCALE	~	DRAWING NO.	4C72	REV	3
					DRN.BY	FAZIDAH	APP.BY					
ALL DIMENSIONS ARE IN MM UNLESS OTHERWISE SPECIFIED.	3	27OCT.99	ADDED PACK NO.									
	2	09.09.98	ADDED DIM & NOTES 3,4 & 5									
	1	20.08.98	ADDED TABLE									
	S.NO	DATE	REVISION NOTE	APP.								