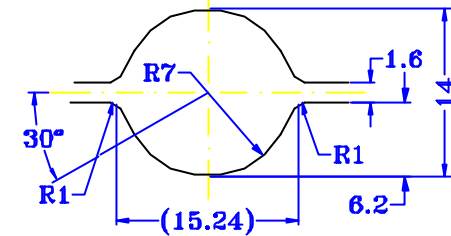
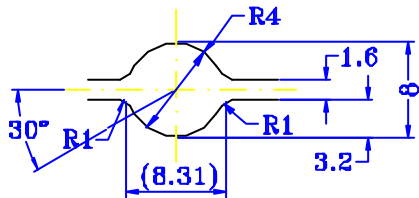


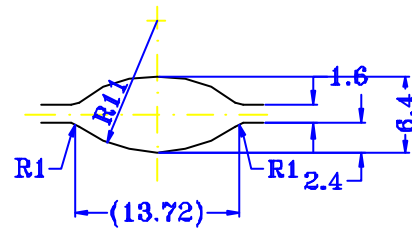
1 - STAND
ST.CODE : SRM-1703-015



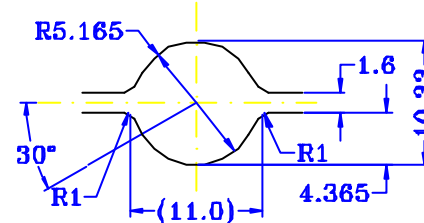
2 - STAND
ST.CODE : SRM-1703-014



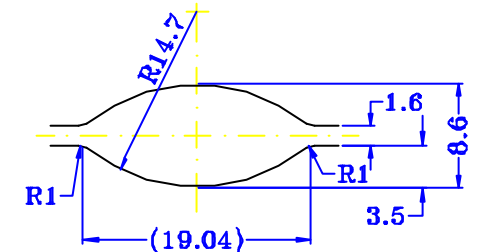
6 - STAND
ST.CODE : SRM-1703-020



5 - STAND
ST.CODE : SRM-1703-028



4 - STAND
ST.CODE : SRM-1703-023



3 - STAND
ST.CODE : SRM-1703-013

MATERIAL : SKD61/ DAC (HITACHI)
HARDNESS : 68±2 Hs (51±2 HRc)
MACHINED ALL OVER ∇∇ (∇∇)

FOR DETAILED PROFILE LAYOUT
REFER DRWG NO: 2R76, 2R77, 2R79, 2R81, 2R82, 2R83

REF. DRG.NO. : YR2-586737

ALL DIMENSIONS ARE IN MM
UNLESS OTHERWISE SPECIFIED.

S.NO	DATE	REVISION NOTE	APP.
4	06.08.97	HARDNESS UNIT CORRECTED	
3	22.08.97	ADDED ST. CODE	
2	24.05.96	MODIFIED AND ADDED NOTE	
1	21.03.95	NEW DRAWING	

METROD (OFHC) SDN BHD

DESCRIPTION ROLL FOR ROLLING MILL

DATE	20.03.95	SCALE	~	DRAWING NO.	REV
DRN.BY	FAZIDAH	APP.BY		2R30	4